

MONTHLY MEMBERSHIP PROGRESS REPORT

LOCATION NEPAL

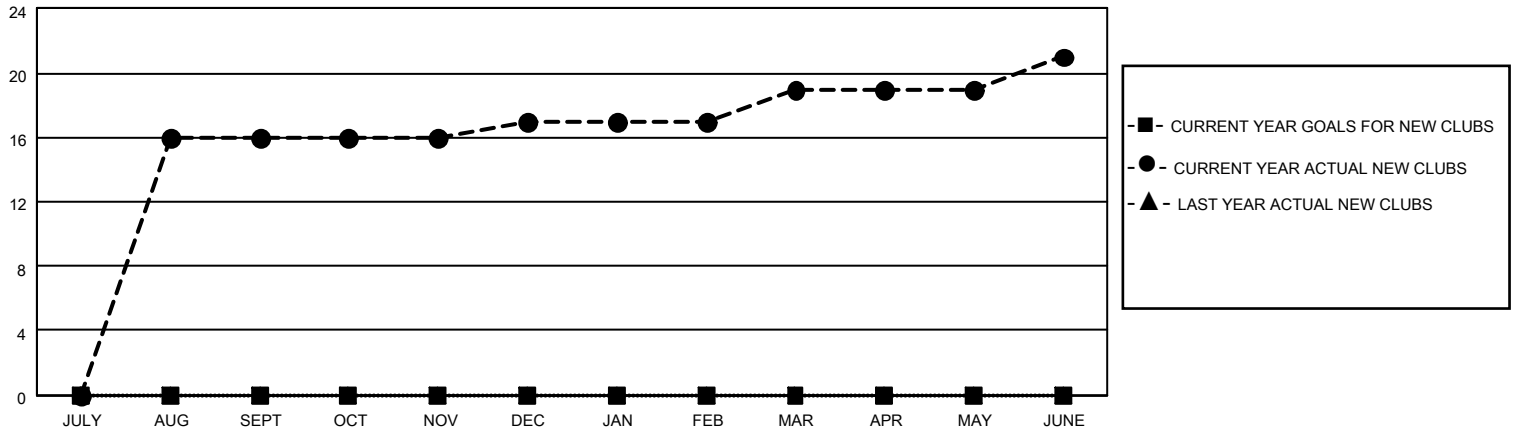
District 325 E

Results as of: 6/30/2023

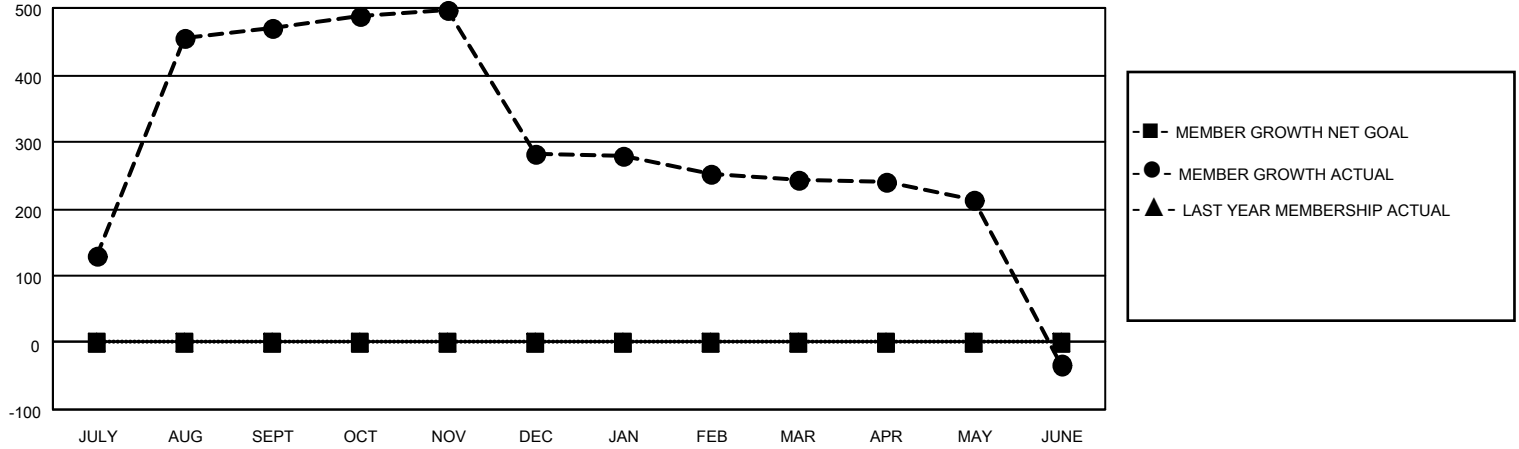
Clubs			
RESULTS FOR 2022-2023			
QUARTER	NEW CLUB GOAL	NEW CLUBS	DROPPED CLUBS
JULY/AUG/SEPT	0	16	0
OCT/NOV/DEC	0	1	4
JAN/FEB/MAR	0	2	2
APR/MAY/JUNE	0	2	10

Members			
RESULTS FOR 2022-2023			
QUARTER	MEMBER GROWTH NET GOAL	MEMBER GROWTH ACTUAL	DROPPED MEMBERS ACTUAL (including transfers)
JULY/AUG/SEPT	0	564	83
OCT/NOV/DEC	0	85	268
JAN/FEB/MAR	0	91	122
APR/MAY/JUNE	0	207	479

GOALS AND ACTUAL NEW CLUBS CUMULATIVE



GOALS AND ACTUAL MEMBERS CUMULATIVE



DROPPED CLUBS: 16

82 CLUBS OF 117 ADDED 1 OR MORE NEW MEMBERS

GENDER DISTRIBUTION

MALE	1,452 (68.20%)
FEMALE	677 (31.80%)
NON BINARY	0 (0.00%)
PREFER NOT TO ANSWER	0 (0.00%)

DROPPED MEMBERS

[CLICK HERE FOR CUMULATIVE MEMBERSHIP DATA](#)

DECEASED	1
CLUB CANCELLED	465
OTHER	486
TOTAL	952

TOTAL FAMILY UNIT MEMBERS 1,464

FAMILY MEMBERS PAYING HALF DUES 1,031